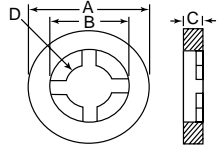




RETAINING WASHERS

RW Series
Retaining Washers

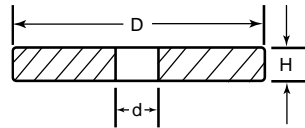
Specifications:

- Material: Nylon
- Color: Natural

Features:

- I.D. designed to grip outside of screw shank
- Easily slides on to the screw but is retained by the screw once assembled
- Used in applications requiring pre-assembly of the screw and washer
- Reduces assembly time and cost

Item No.	Screw Size	A		B		C		D		Pack Qty.
		In	mm	In	mm	In	mm	In	mm	
RW2032A	#2	0.203	5.16	0.115	2.92	0.032	0.81	0.078	1.98	1000
RW2062A	#2	0.203	5.16	0.115	2.92	0.062	1.57	0.078	1.98	1000
RW4032A	#4	0.265	6.73	0.156	3.96	0.032	0.81	0.102	2.59	1000
RW4050A	#4	0.250	6.35	0.156	3.96	0.050	1.27	0.102	2.59	1000
RW4062A	#4	0.265	6.73	0.156	3.96	0.062	1.57	0.102	2.59	1000
RW4125A	#4	0.265	6.73	0.156	3.96	0.125	3.18	0.102	2.59	1000
RW6032A	#6	0.328	8.33	0.198	5.03	0.032	0.81	0.128	3.25	1000
RW6062A	#6	0.328	8.33	0.198	5.03	0.062	1.57	0.128	3.25	1000
RW7062A	#7	0.750	19.05	0.375	9.53	0.062	1.57	0.215	5.46	1000
RW8032A	#8	0.390	9.91	0.235	5.97	0.032	0.81	0.152	3.86	1000
RW8045A	#8	0.453	11.51	0.218	5.54	0.045	1.14	0.135	3.43	1000
RW8062A	#8	0.390	9.91	0.235	5.97	0.062	1.57	0.152	3.86	1000
RW10032A	#10	0.453	11.51	0.277	7.04	0.032	0.81	0.177	4.50	1000
RW10062A	#10	0.453	11.51	0.277	7.04	0.062	1.57	0.177	4.50	1000
RW250032A	1/4	0.593	15.06	0.375	9.53	0.032	0.81	0.234	5.94	1000
RW250062A	1/4	0.593	15.06	0.375	9.53	0.062	1.57	0.234	5.94	1000
RW312032A	5/16	0.734	18.64	0.470	11.94	0.032	0.81	0.292	7.42	1000
RW312062A	5/16	0.734	18.64	0.470	11.94	0.062	1.57	0.292	7.42	1000
RW375032A	3/8	0.890	22.61	0.564	14.33	0.032	0.81	0.350	8.89	1000
RW375062A	3/8	0.890	22.61	0.564	14.33	0.062	1.57	0.350	8.89	1000
RW437032A	7/16	1.031	26.19	0.570	14.48	0.032	0.81	0.410	10.41	500
RW437062A	7/16	1.031	26.19	0.570	14.48	0.062	1.57	0.410	10.41	500
RW500032A	1/2	1.125	28.58	0.690	17.53	0.032	0.81	0.468	11.89	500
RW500062A	1/2	1.125	28.58	0.690	17.53	0.062	1.57	0.468	11.89	500
RW875062A	7/8	1.343	34.11	0.940	23.88	0.062	1.57	0.825	20.96	500

RWM Series
Metric Retaining Washers

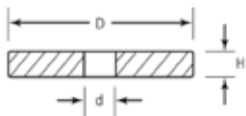
Specifications:

- Material: Nylon
- Color: Natural

Features:

- Designed to grip outside of screw shank
- Easily slides on to the screw but is retained by the screw once assembled
- Ideal for applications requiring pre-assembly of the screw and washer
- Reduces assembly time and cost
- Ideal for outdoor environments
- Resistant to corrosion, oil, abrasion and most chemicals

Item No.	Screw Size	D (OD) mm	d (ID) mm	H (Thickness) mm	Pack Qty.
RWM050A	M2	5.0	2.7	1.5	1000
RWM100A	M3	9.0	3.2	1.5	1000
RWM150A	M3	5.5	3.2	2.2	1000
RWM200A	M4	7.0	4.3	2.3	1000
RWM250A	M4	12.0	4.3	1.4	1000
RWM300A	M5	11.5	5.3	1.4	1000
RWM350A	M5	8.5	5.3	2.8	1000
RWM400A	M6	18.0	6.4	2.0	1000
RWM450A	M6	10.0	6.4	2.8	500
RWM500A	M8	13.0	8.4	2.8	500
RWM550A	M10	21.0	10.5	2.5	500

015XXXXXX03
Retaining PE Flat Washer

Specifications:

- Material: Polyethylene

Features:

- Designed to grip outside of screw shank
- Easily slides on to the screw but is retained by the screw once assembled
- Ideal when pre-assembly of the screw and washer is required
- Reduces assembly time and cost

Item No.	Color	Ø d I.D.		Ø D O.D.		H		Fits Screw		Pack Qty.
		In	mm	In	mm	In	mm			
015002500503	Red	.106	2.7	.256	6.5	.043	1.1	#3	M2.5	1000
015003000503	Red	.126	3.2	.276	7.0	.055	1.4	#5	M3	1000
015004000503	Red	.169	4.3	.354	9.0	.043	1.1	#8	M4	1000
015005000503	Red	.209	5.3	.433	11.0	.051	1.3	#10	M5	1000
015006000503	Red	.252	6.4	.472	12.0	.063	1.6	1/4	M6	500
015008000503	Red	.331	8.4	.669	17.0	.079	2.0	5/16	M7	500
015102500203	Grey	.106	2.7	.197	5.0	.059	1.5	#3	M2.5	1000
015103000203	Grey	.126	3.2	.217	5.5	.083	2.1	#5	M3	1000
015104000203	Grey	.169	4.3	.276	7.0	.087	2.2	#8	M4	1000
015105000203	Grey	.209	5.3	.335	8.5	.106	2.7	#10	M5	1000
015106000203	Grey	.252	6.4	.394	10.0	.106	2.7	1/4	M6	1000
015108000203	Grey	.331	8.4	.512	13.0	.106	2.7	5/16	M7	500
015202508703	Blue	.106	2.7	.197	5.0	.039	1.0	#3	M2.5	1000
015203008703	Blue	.126	3.2	.236	6.0	.039	1.0	#5	M3	1000
015204008703	Blue	.169	4.3	.315	8.0	.039	1.0	#8	M4	1000
015205008703	Blue	.209	5.3	.394	10.0	.039	1.0	#10	M5	1000
015206008703	Blue	.252	6.4	.433	11.0	.059	1.5	1/4	M6	1000
015208008703	Blue	.331	8.4	.591	15.0	.059	1.5	5/16	M7	500
015210008703	Blue	.413	10.5	.709	18.0	.059	1.5	3/8	M10	500